

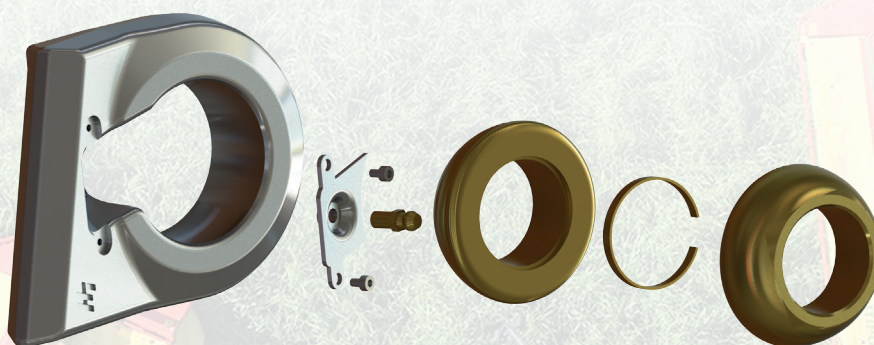
Replaceable ball end coupling

Innovative replaceable ball coupling is available for lower link arms, lift rods and top links. It is also suitable for many other applications than connection between tractor and implement. Replaceable ball coupling is more durable, easier to manufacture and easier to use than traditional ball ends. The traditional method is to machine a cavity in the ball end, insert the ball and then enclose the ball by compressing the metal around it. LH Lift's innovation utilises two hemispheric balls that are inserted into a tempered ball seat, allowing the use of significantly stronger materials.

Replaceable ball coupling is more durable, easier to manufacture and easier to use than traditional ball ends.



Replaceable ball coupling is also available with semi-permanent fixing with locking ring and lubrication.



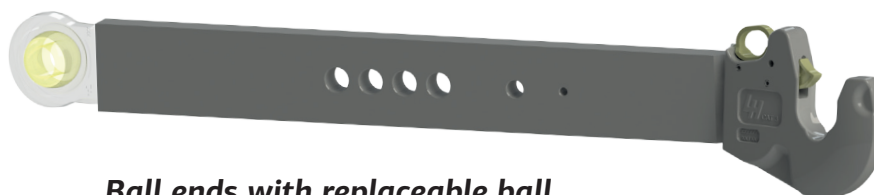
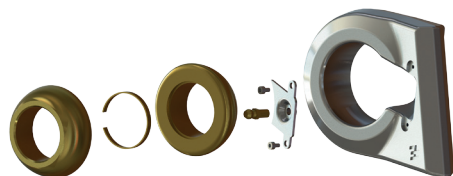
Attention! Replaceable ball coupling fits also other applications than agricultural machinery. For example replaceable ball coupling can be installed in a ball end of a **hydraulic cylinder**. Replaceable ball coupling in a hydraulic cylinder means less product variation in production, but option for customer to use different balls sizes.



Faster. Smarter. Done.

Replaceable ball end coupling is available for

Lower link arms



Ball ends with replaceable ball

External diameter
100 mm
108 mm
120 mm

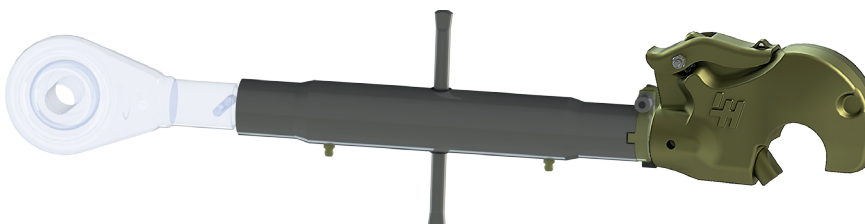
Lift rods



Ball ends with replaceable ball

Category	Thread size	External diameter
Cat 2	M27, M30	100 mm
Cat 3	M33, M36	108 mm
Cat 4	M36, M40, M45	

Top links



Ball ends with replaceable ball

Category	Thread size	External diameter
Cat 2	M27, M30	82 mm
Cat 3	M33, M36	100 mm
Cat 4	M36, M40, M45	108 mm 120 mm

... and any other applications like hydraulic cylinder!

